

4

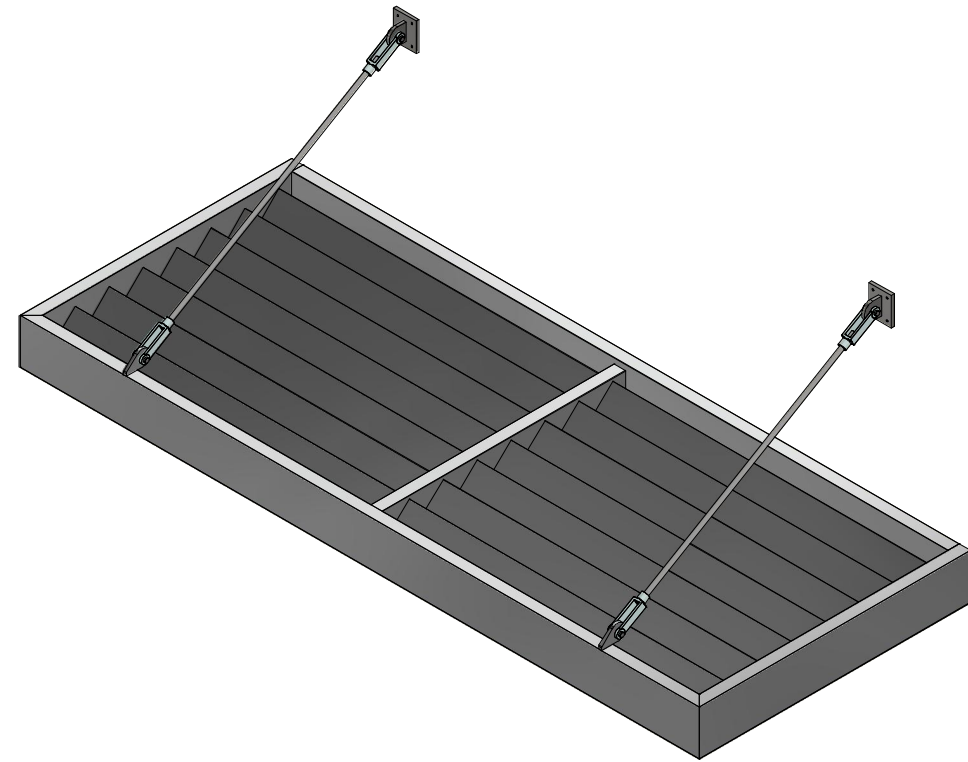
3

2

1

B

B



NOTES

REVISIONS



213 E. Ermina Ave.
Spokane, WA 99207
Ph: (509)892-6180
Email: info@vestismfg.com

CUSTOM LOUVERED SUNSHADE

VESTIS CUSTOM SUNSHADES

4

3

2

1

A

A



GENERAL NOTES

1. VESTIS SYSTEMS REQUIRES ONE SET OF CORRECTED DRAWINGS TO REVISE APPROVAL DRAWINGS OR AN APPROVED SET OF DRAWINGS PRIOR TO FABRICATION OF ORDER
2. ORDERS REQUIRING ENGINEERING WILL ONLY BE FABRICATED AFTER ALL DRAWINGS ARE APPROVED
3. CLIENT TO VERIFY ALL CANOPY AND FIELD DIMENSIONS PRIOR TO RELEASE FOR FABRICATION
4. ALL ORDERS NOT APPROVED FOR PRODUCTION WITHIN 90 DAYS 30 DAYS OF ORDER ACCEPTANCE ARE SUBJECT TO REVIEW FOR PRICING (DUE TO RAPID CHANGES IN PRICING OF MATERIALS WE ARE CURRENTLY ONLY GUARANTEEING QUOTES FOR 30 DAYS)
5. ADEQUACY OF BUILDING STRUCTURE MUST BE CERTIFIED BY BUILDING ENGINEER OF RECORD
6. WALL SYSTEMS WITH EFIS, BRICK, VENEER, OR METAL PANEL EXTERIOR MAY REQUIRE COMPRESSION SPACERS TO PREVENT CRUSHING, TO BE SUPPLIED BY OTHERS
7. VESTIS SYSTEMS PROVIDES INTEGRAL HARDWARE, SITE SPECIFIC MOUNTING HARDWARE BY OTHERS
8. ALL STRUCTURE BEARING LOAD OF CANOPY ANCHORS IS TO BE DESIGNED, ENGINEERED, AND SUPPLIED BY OTHERS

PROJECT NOTES

1. 8" FLAT FASCIA SHOWN; 6" & 8" FLAT & C-CHANNEL FASCIA AVAILABLE
2. 10' WIDE x 4' PROJECTION SHOWN
3. POWDER COATED, VARIOUS COLORS AVAILABLE

DESIGN NOTES

1. POWDER COAT FINISH, COLOR TBD
2. COUNTER-FLASHING AND SEALANT BY CANOPY INSTALLER

DRAWING SCHEDULE	
SHEET	DESCRIPTION
1	COVER
2	NOTES/INFORMATION
3	GENERAL DIMENSIONS
4	LEDGER MOUNT COMPONENTS
5	LEDGER BRACKET DETAIL
6	WALL MOUNT DETAILS

NOTES

REVISIONS

NO.	DESCRIPTION	DATE



213 E. Ermina Ave.
Spokane, WA 99207
Ph: (509)892-6180
Email: info@vestismfg.com

CUSTOM LOUVERED SUNSHADE

2 of 7

4

3

2

1

GENERAL SUNSHADE DIMENSIONS

NOTES

1. SPANS GREATER THAN 12' CAN BE COVERED WITH MULTIPLE SECTIONS BOLTED END-TO-END
2. CORNER-WRAPPING OPTIONS AVAILABLE

REVISIONS

NO.	DESCRIPTION	DATE

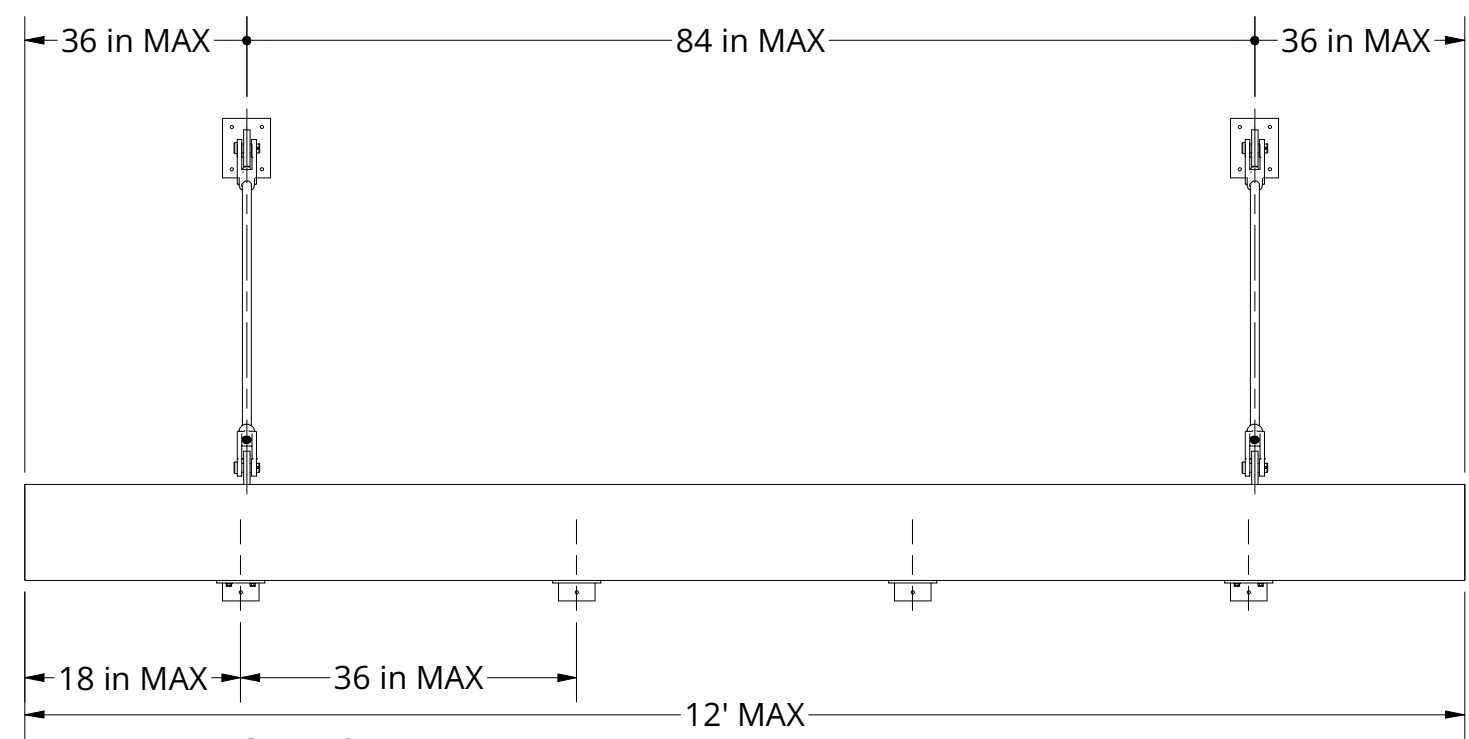
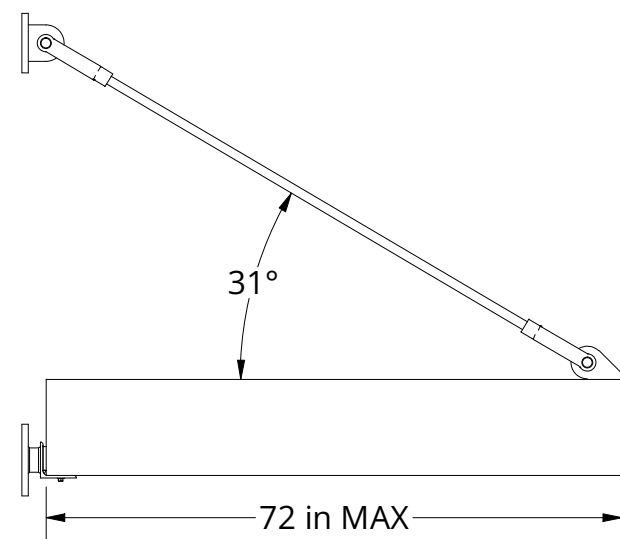
--	--



213 E. Ermina Ave.
Spokane, WA 99207
Ph: (509)892-6180
Email: info@vestismfg.com

--

CUSTOM LOUVERED SUNSHADE



LEDGER MOUNT
SCALE 3/4"=1'-0"

4

3

2

1

4

3

2

1

SUNSHADE COMPONENTS

NOTES

REVISIONS

B

B

WELDED "PACMAN" TIE ROD CONNECTION

2" x 8" x 1/8" RECT. TUBE FRAME

2" x 6" x 1/8" RECT. TUBE RAFTER

1" x 6" x 1/8" RECT. 6063-T52 ALUMINUM TUBE LOUVERS

2" x 8" x 1/8" RECT. TUBE FASCIA

Empty rectangular box for notes or revisions.



VESTIS
MANUFACTURING

213 E. Ermina Ave.
Spokane, WA 99207
Ph: (509)892-6180
Email: info@vestismfg.com

Empty rectangular box for notes or revisions.

CUSTOM LOUVERED SUNSHADE

A

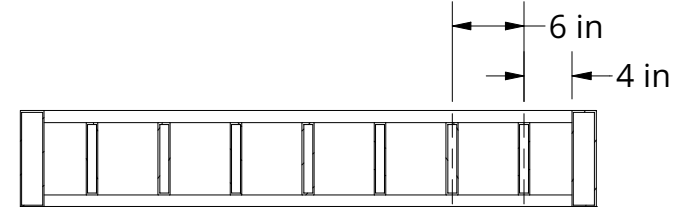
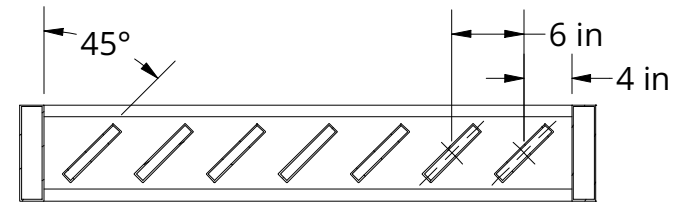
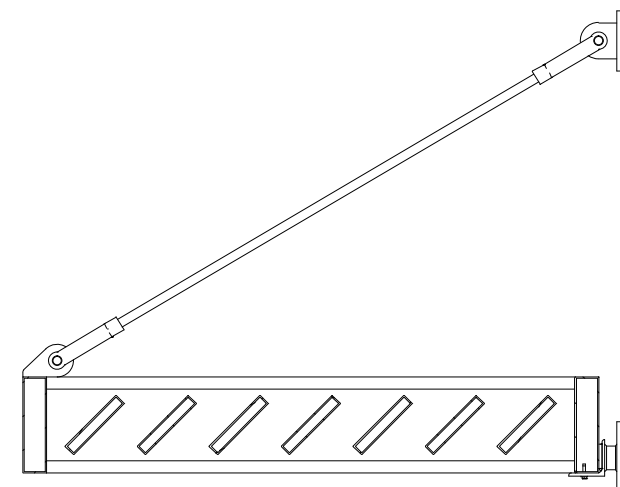
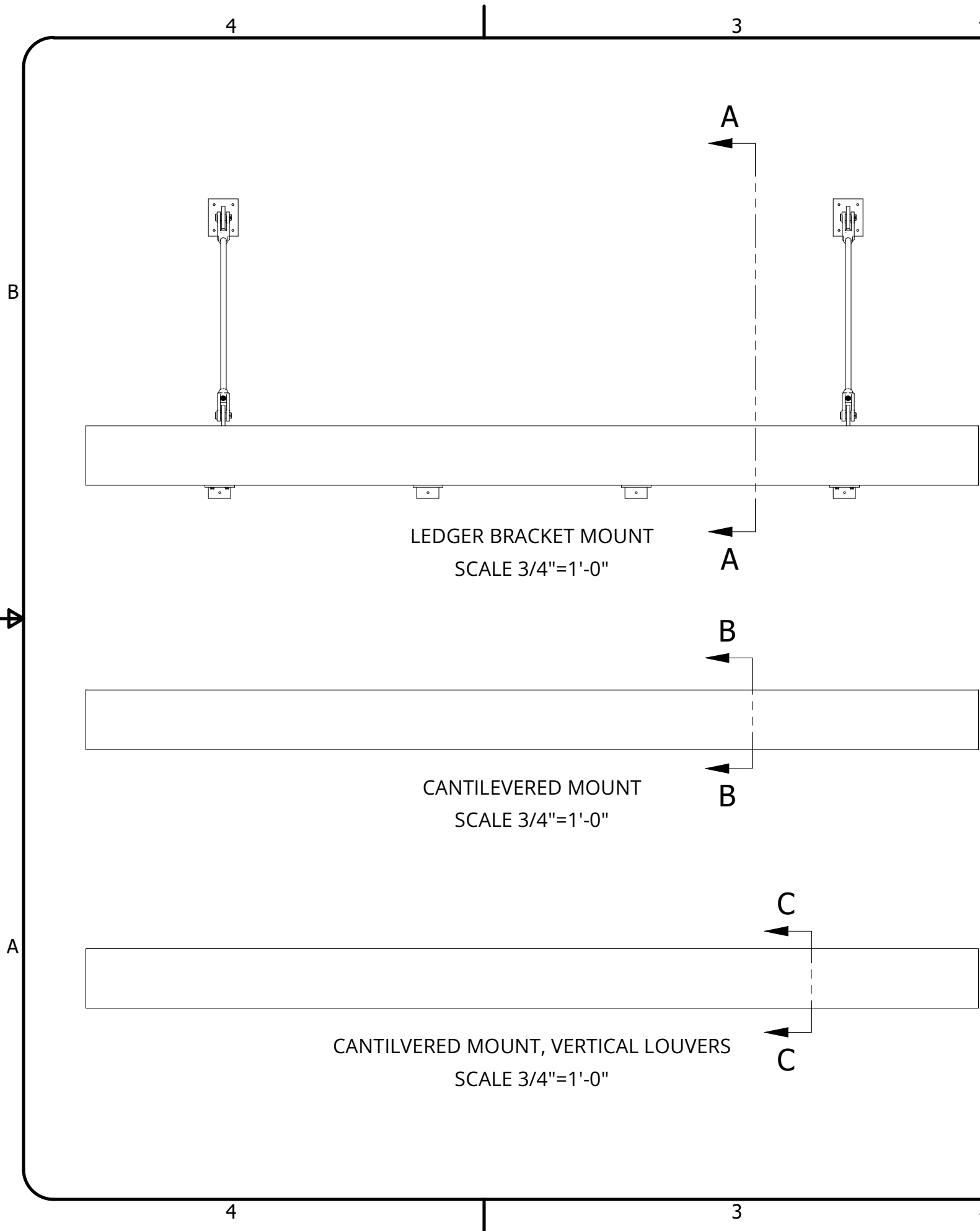
A

4

3

2


1



1

NOTES

REVISIONS	



213 E. Ermina Ave.
Spokane, WA 99207
Ph: (509)892-6180
Email: info@vestismfg.com

CUSTOM LOUVERED SUNSHADE

5 of 7

4

3

2

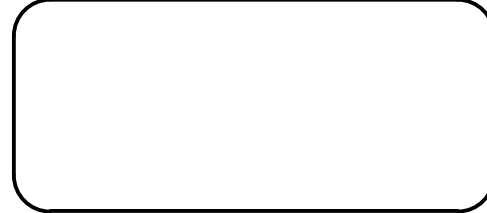
1

NOTES

- ALL BRACKET COMPONENTS A36 STEEL UNLESS OTHERWISE SPECIFIED

REVISIONS

NO.	DESCRIPTION	DATE



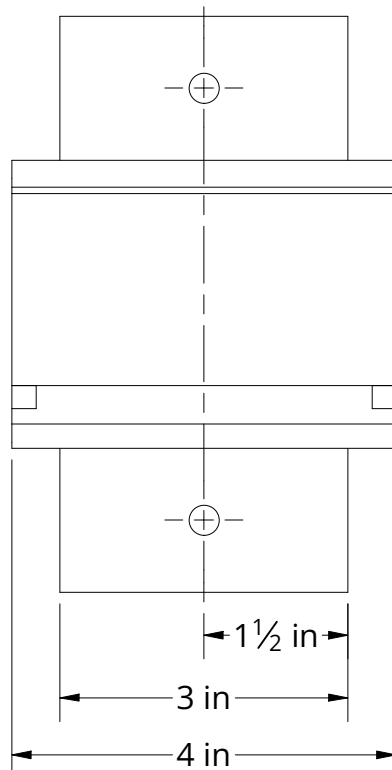
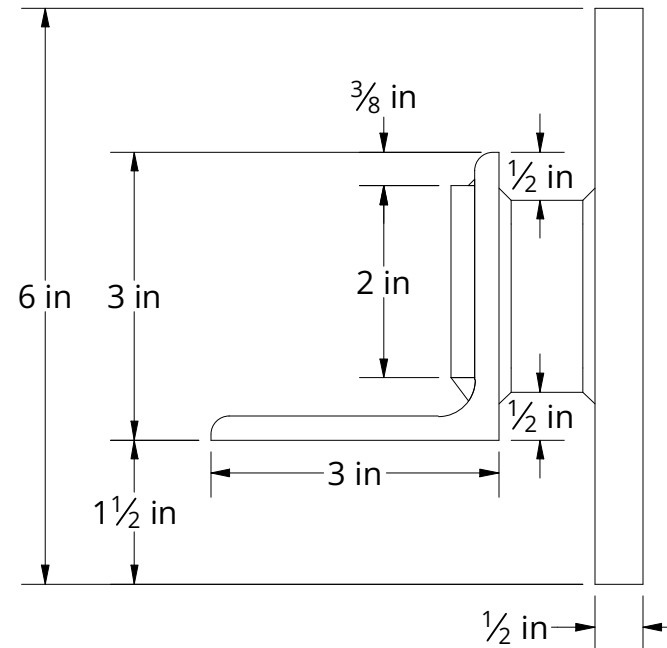
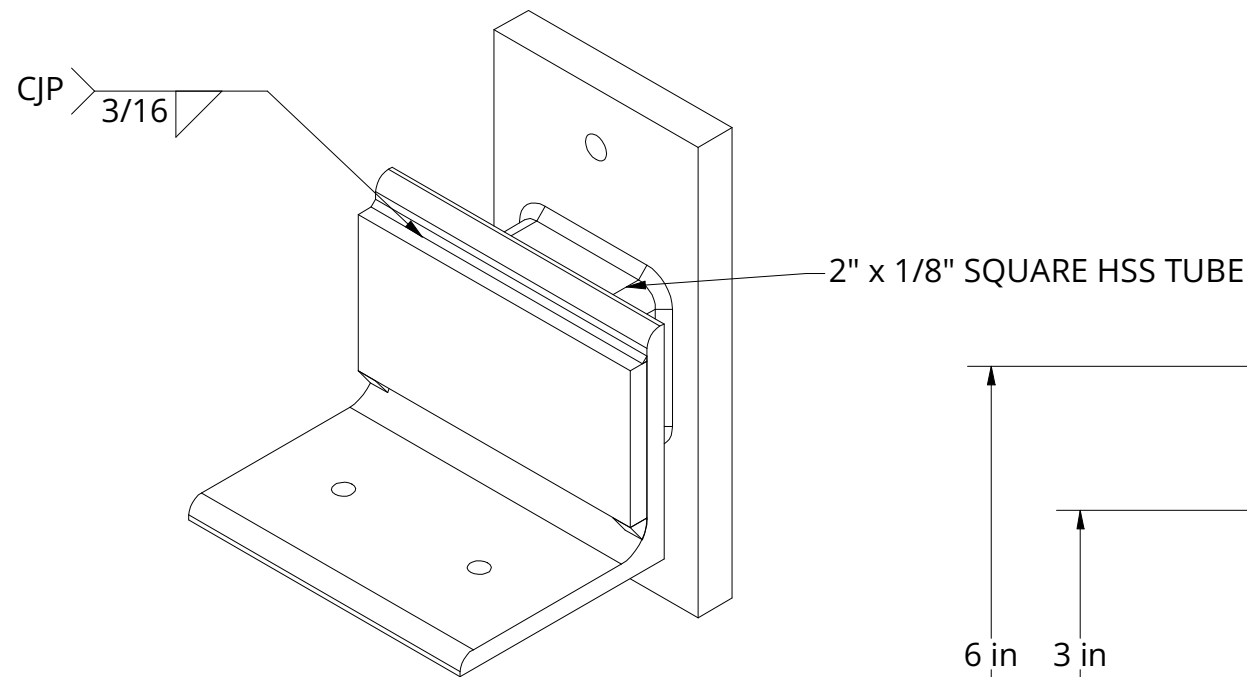
VESTIS
MANUFACTURING

213 E. Ermina Ave.
Spokane, WA 99207
Ph: (509)892-6180
Email: info@vestismfg.com

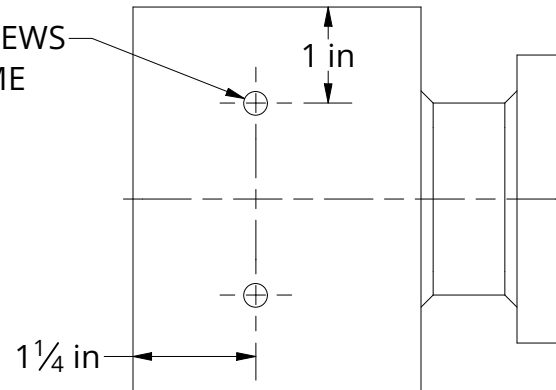


CUSTOM LOUVERED SUNSHADE

LEDGER BRACKET DETAIL



Ø1/4 in FOR Ø1/4 TEK SCREWS INTO BOTTOM OF FRAME



4

3

2

1

B

B

A

A

4

3

2

1

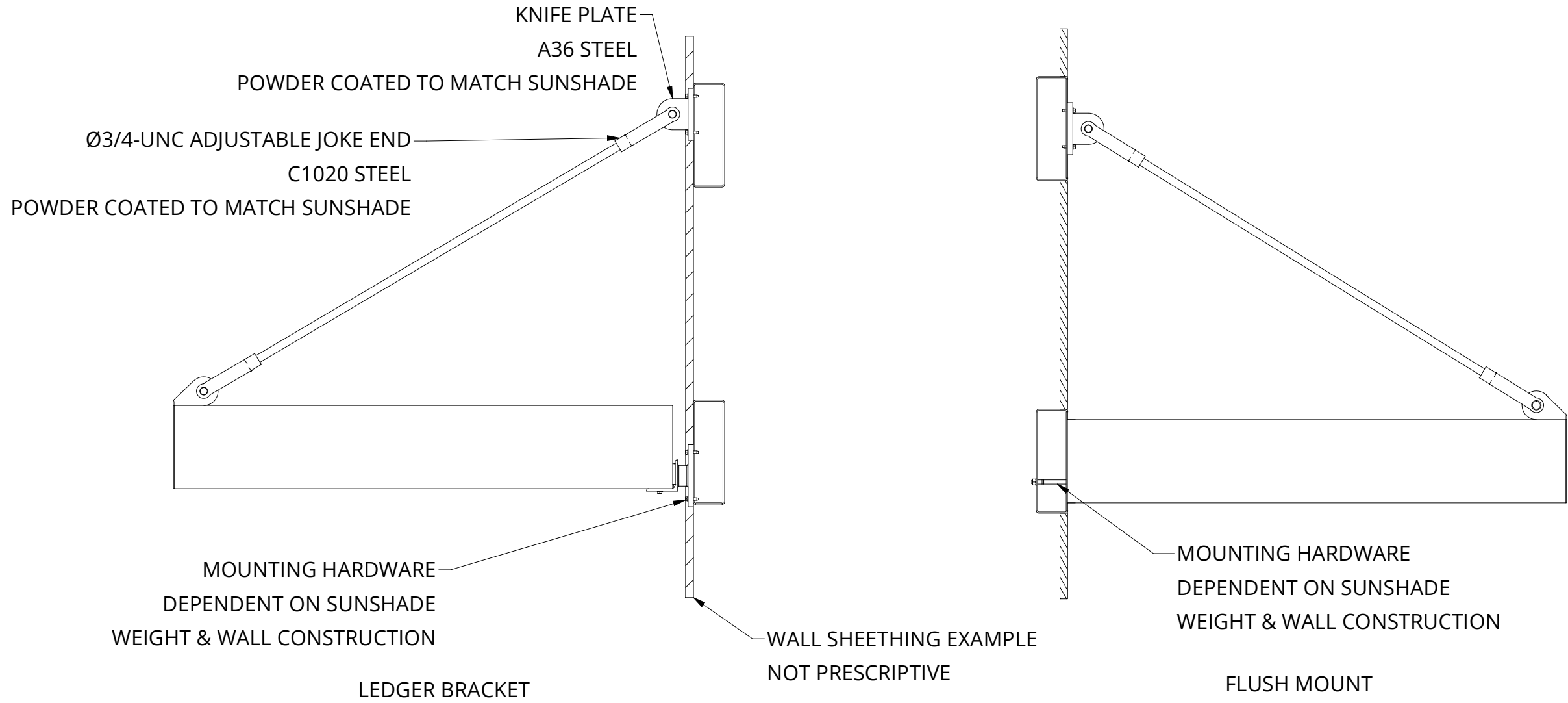
NOTES

- SUNSHADES ARE COMPATIBLE WITH A VARIETY OF CONSTRUCTION STYLES, INCLUDING WOOD FRAME, STEEL FRAME, & CMU

REVISIONS

NO.	DESCRIPTION	DATE

WALL MOUNT DETAILS



213 E. Ermina Ave.
 Spokane, WA 99207
 Ph: (509)892-6180
 Email: info@vestismfg.com

CUSTOM LOUVERED SUNSHADE